



CONCRETE EFFECT

CONCRETE IN A TIN



Paint runs through our veins.



© Koch

HARD SHELL SOFT CORE: ADLER brings the sought-after concrete look to wood

Concrete is moving into modern living spaces and has undergone an amazing transformation. Whether it is used for an interior wall, on the floor or even for accessories, more and more designers and architects are relying on the rough, strong effect of this versatile building material. The hard shell gives a modern, minimalist look, but unfortunately, it is not entirely straightforward to use. This is why ADLER is using the soft core: with the new concrete effect coating, wood can be transformed effortlessly into an elegant image of the desirable grey tones.

There will be no limits to your creativity with this product. The concrete effect coating can be applied wet-on-wet in a range of shades to obtain a particularly vivid colour effect. By varying grinding intensity, you can refine the feel and look of the concrete surface as you wish - from coarse to fine, anything is possible. The quantity of filler applied can also be selected individually. There is no single standard look for ADLER Betoneffekt, but it is possible to create many different surface variations, by adjusting the amount of filler used, the grinding intensity and the colour blend.

The ADLER Betoneffekt is available in five standard colours – from the almost black “**Cuba Libre**” and the three shades of grey “**Caipirinha**”, “**Daiquiri**” and “**White Lady**” through to the reddy-brown “**Bahama Mama**”. With the top coat of lightfast ADLER furniture varnish, the finish gives the desired quality of resistance and it can be applied to various furniture surfaces.

ADLER Betoneffekt opens up new possibilities in wood surface styling.

COLOUR MIX

WHITE LADY

4083053193

BAHAMA MAMA

4083053190

CUBA LIBRE

4083053189

CAIPIRINHA

4083053191

DAIQUIRI

4083053192

Colour differences to the original shade are due to the printing process.
To evaluate the final result, it is necessary to make a sample on an original substrate.

STEP BY STEP

to the concrete effect



Preparation

What is particularly important for the concrete effect is the preparation of the product: stir the ADLER Betoneffekt by hand well with a wooden stirrer. Under no circumstances you should use an electric mixer or similar appliances.

Apply concrete effect with a spatula

Apply the plaster-like primer with a stainless steel trowel. Feel free to apply it irregularly - this is how the characteristic texture emerges that makes the concrete effect look so realistic. Whether you prefer to create coarse strokes or finer transitions is all down to your own taste. You can also mix the different colours with each other wet-in-wet in order to achieve a particularly vibrant surface effect. After that the workpiece should dry overnight.



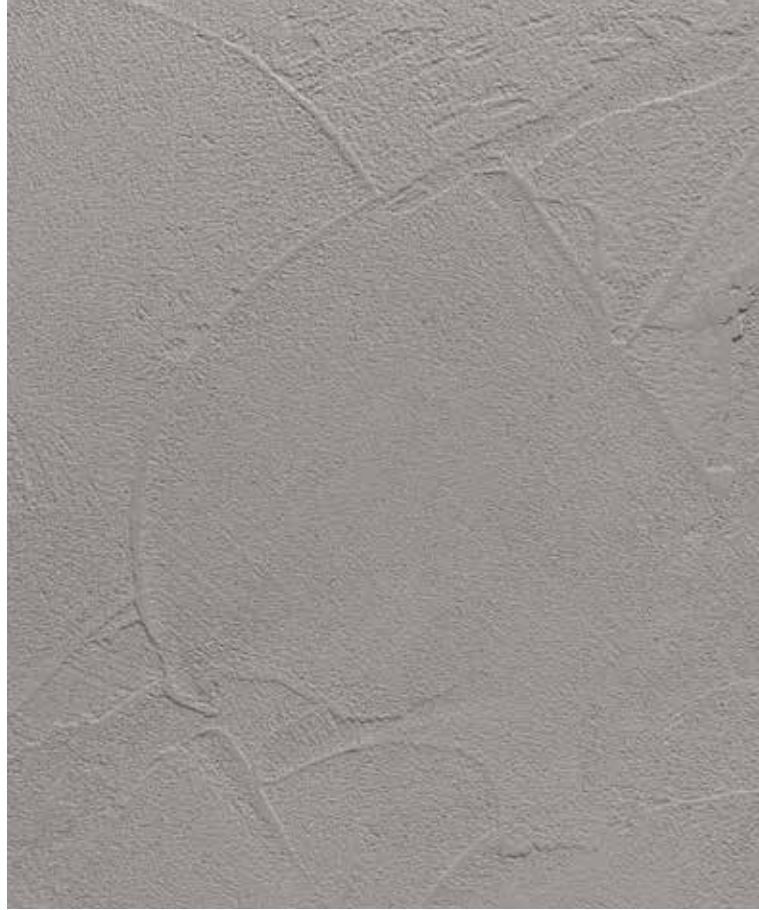
Sanding

Now sand the surface with grit size 80. In this way you will smooth off the rough surface and also give your trendy furniture the feel of real concrete. Here too you can vary the sanding intensity as much as you want, thereby creating individual, unique surfaces.

Topcoat

Now it is time for the invisible protective coat: apply a topcoat to the workpiece using a lightfast furniture varnish in as low a gloss level as possible. We recommend ADLER PUR-Antiscratch G5, which will help you to achieve a particularly robust, scratch-resistant surface – as you would expect from “concrete”.





APPLICATION-OPTIONS

Fine | Coarse

By adjusting the application quantity, the type of processing used and the grinding intensity, the resulting concrete effect can be individually customised.

Article no. concrete effect:

Cuba Libre	4083 053 189
Bahama Mama	4083 053 190
Caipirinha	4083 053 191
Daiquiri	4083 053 192
White Lady	4083 053 193

Containers: 3 Liter

You can add a top coat of lightfast furniture varnish such as:

ADLER PUR-Antiscratch HQ 26320 ff
ADLER Legnopur 26211 ff
ADLER Aqua-Top Antiscratch 30341 ff
ADLER Aqua-Resist 30460 ff
preferably in dull matt setting (G5 or G10)

Recommended substrate:

Chipboard - or wood fibre material (e.g. MDF)

Two-tone

The individual shades of ADLER Betoneffekt can be applied wet-on-wet. Depending on your preference, the shades can be combined to obtain a vibrant surface effect.



Paint runs through our veins.



Paint runs through our veins.

Over 80 years ago, Johann Berghofer laid the foundation stone for ADLER and work was started to develop its own paints.

Much has changed since that time, but one thing has stayed the same: our passion for colour, which drives us day after day to work on the perfect surface coating.

Paint runs through our veins.

ADLER-Werk Lackfabrik · A-6130 Schwaz/Tirol · Bergwerkstraße 22 · T. +43 5242 6922-0

info@adler-lacke.com · www.adler-lacke.com · facebook.com/adlerlacke

ADLER Deutschland GmbH · Kunstmühlstr. 14 · D-83026 Rosenheim · T. +49 8031 304 5174
ADLER Lack AG · Etzelstraße 5 · CH-8856 Tuggen · T. +41 55 465 2121
ADLER Polska Sp. z o.o. · ul. Tyniecka 229 · PL-30-376 Kraków · T. +48 12 252 4001
ADLER Slovensko s.r.o. · Montážna 3 · SK-971 01 Prievidza · T. +421 46 5199 621

ADLER Česko s.r.o. · Pražská 675/10 · CZ - 642 00 Brno - Bosonohy · T. +420 731 725 957
ADLER Italia S.r.l. · Via per Marco 12/D · I-38068 Rovereto · T. +39 0464 425 308
ADLER Benelux BV · De Boelakkers 12 · NL-5591 RA Heeze · T. +31 85 064 2020